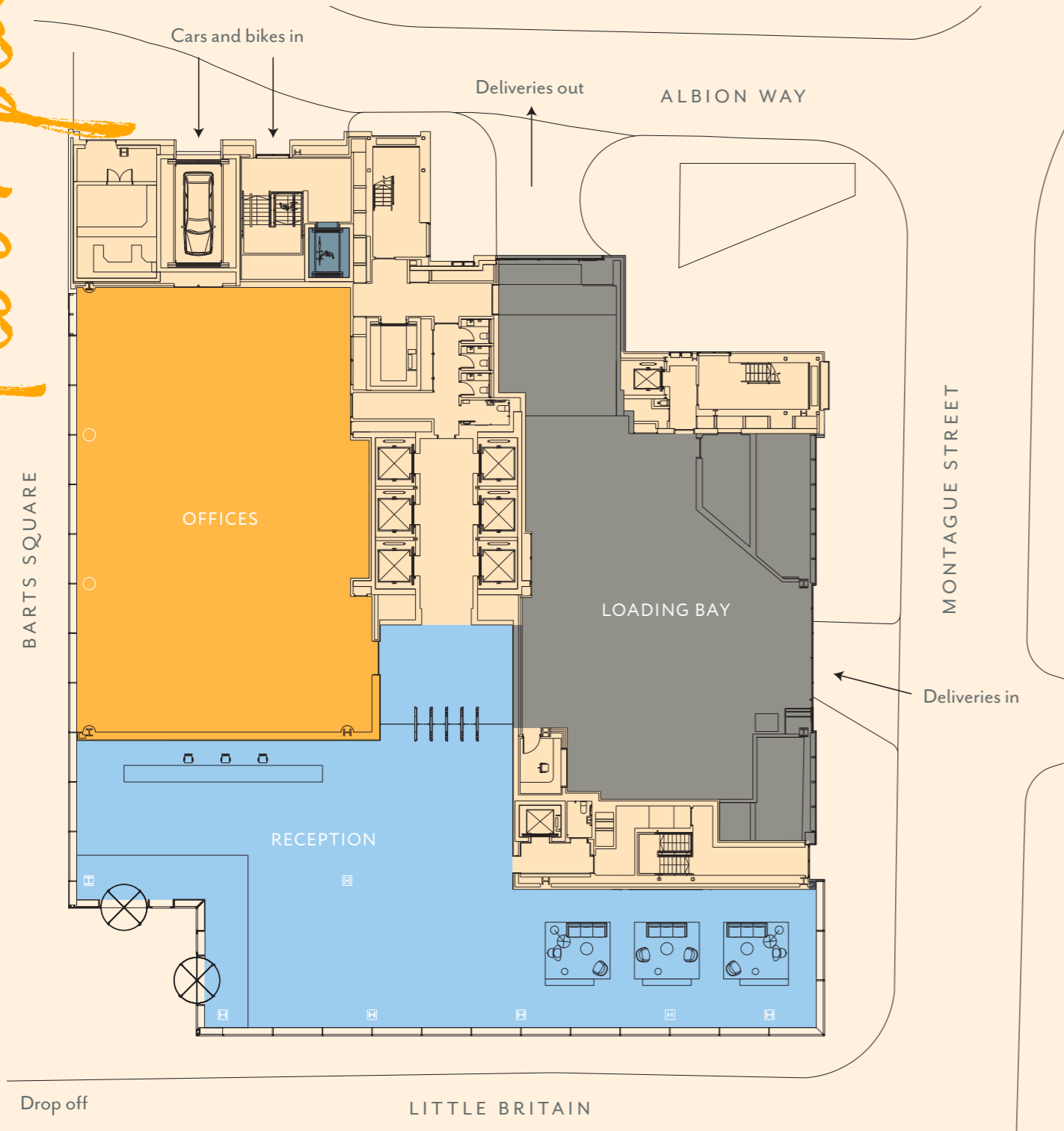


Floor plans

ONE BARTHOLOMEW

BARTS SQUARE LONDON



GROUND

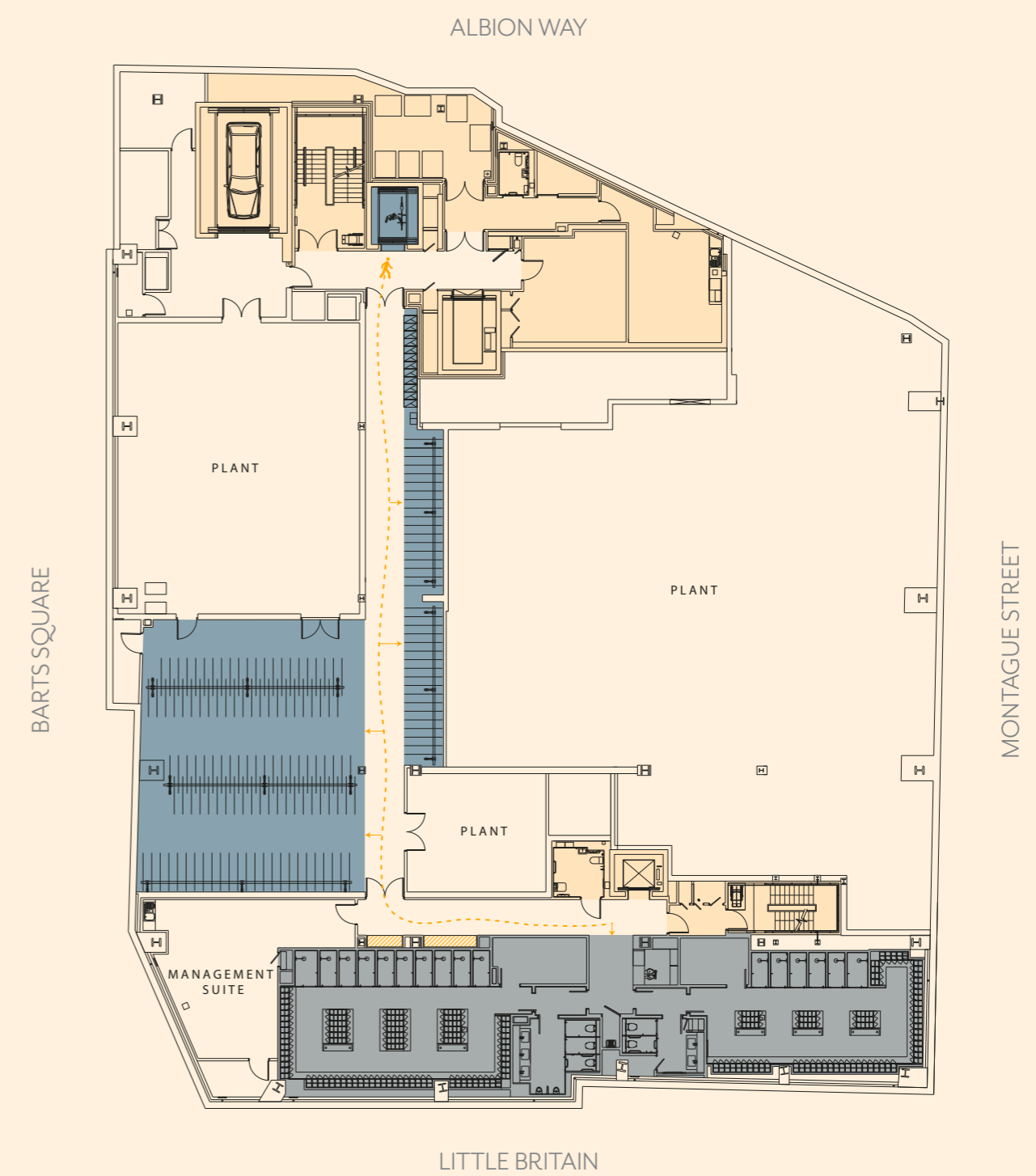
KEY

- Office 5,101 sq ft (473.9 sq m)
- Core
- Bike lift
- Reception 5,991 sq ft (556.6 sq m)
- Loading bay



ONE BARTHOLOMEW

BARTS SQUARE LONDON



LOWER GROUND

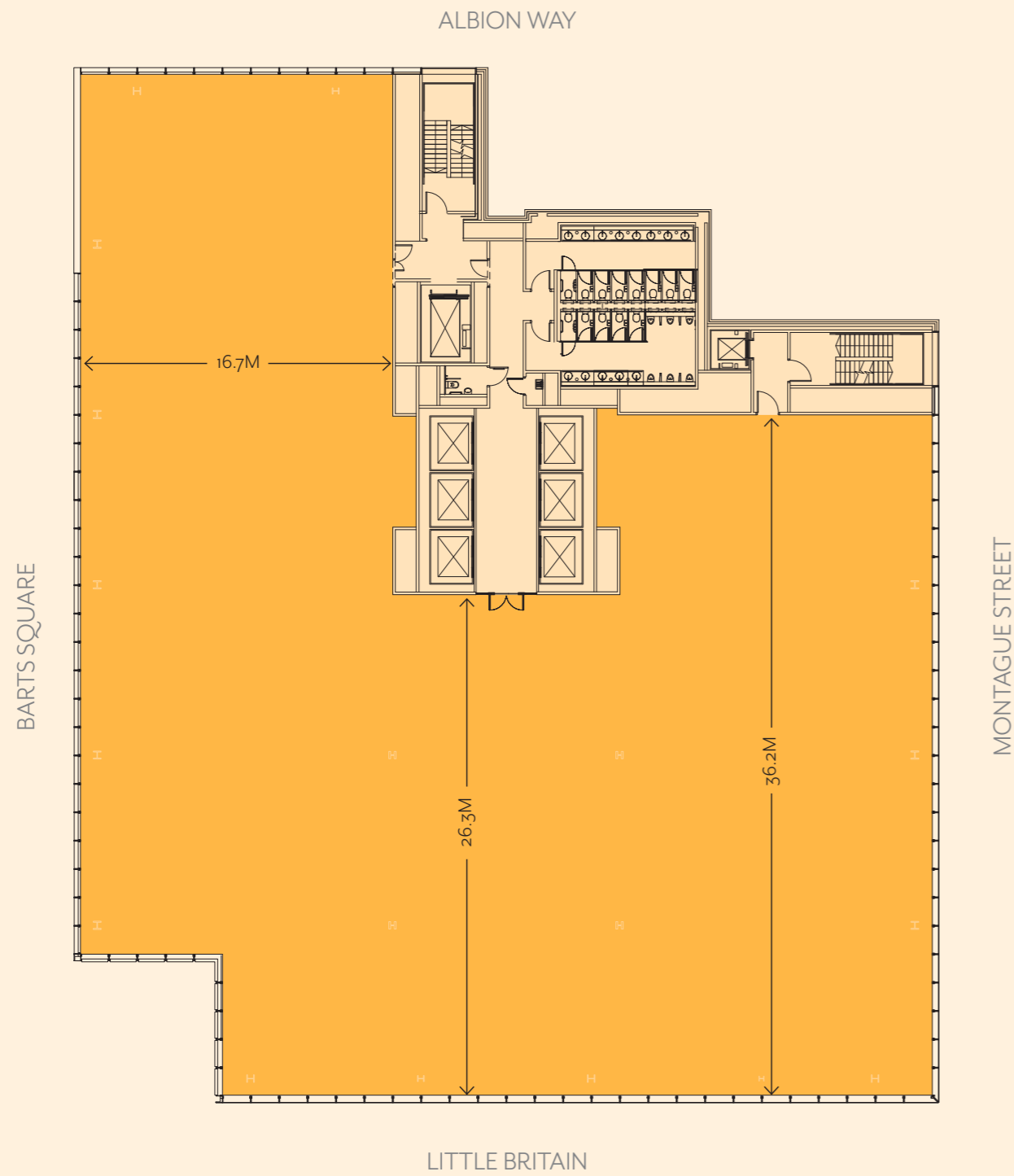
KEY

- 336 Bike racks / Bike lift
- Core
- Changing rooms (including 338 lockers)
- Route for bike storage/showers/lockers
- 90 Amazon Lockers



ONE BARTHOLOMEW

BARTS SQUARE LONDON



TYPICAL LOWER FLOOR
1ST - 4TH FLOOR - 19,079 SQ FT

KEY

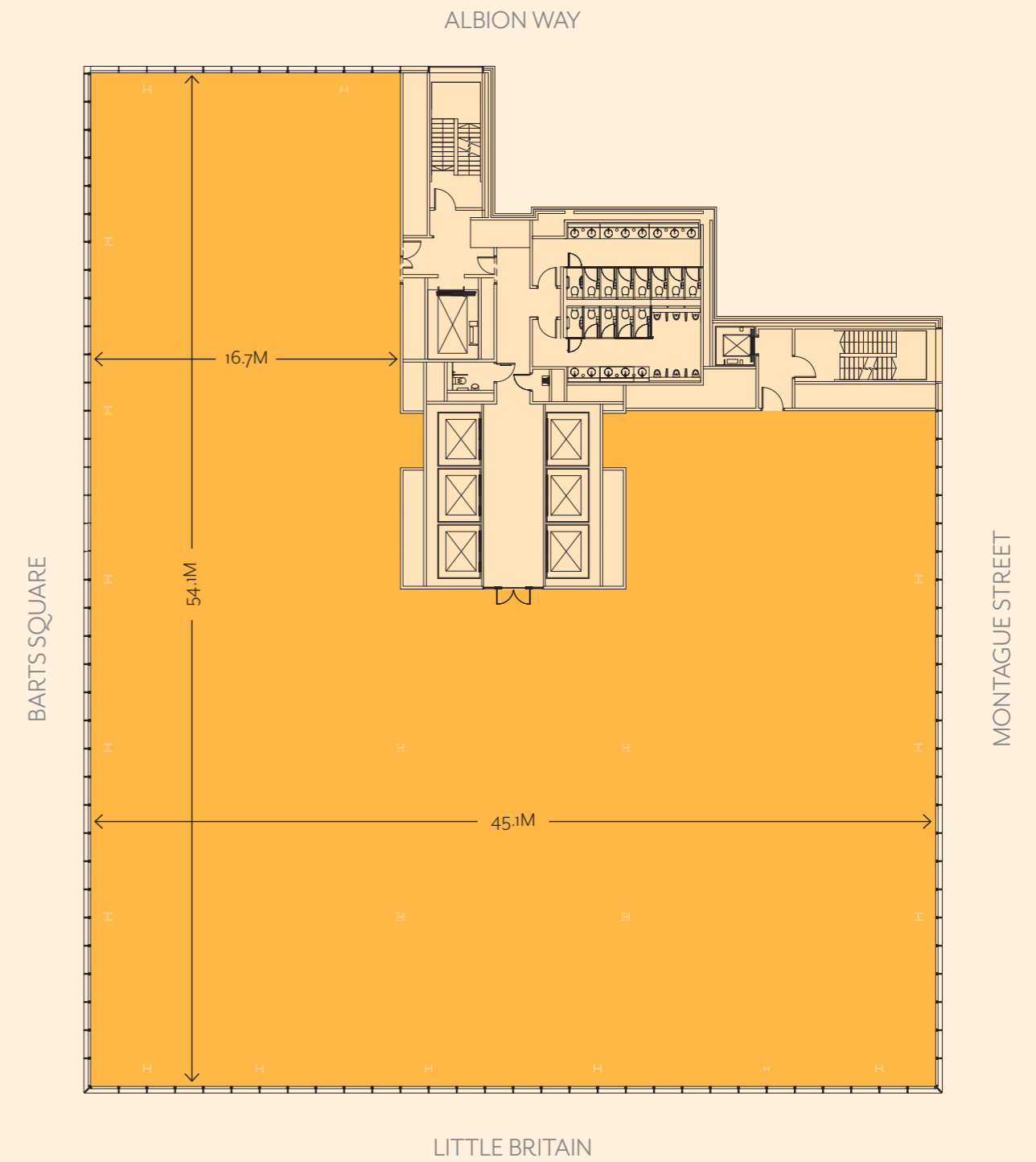
Office 19,079 sq ft (1,772.5 sq m)

Core



ONE BARTHOLOMEW

BARTS SQUARE LONDON



TYPICAL UPPER FLOOR
5TH - 8TH FLOOR - 19,619 SQ FT

KEY

Office 19,619 sq ft (1,822.7 sq m)

Core

